



I. Features

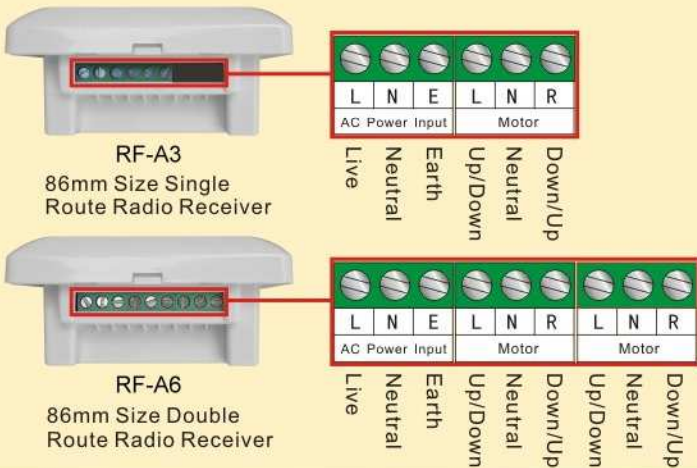
- Work with all A-OK transmitter and tubular motor;
- 86mm x 86mm in Mounting Size;
- Fancy shape with design patent;
- Assembled by SMT precise automatic processing with damp-proof technique;
- In compliance with Fire-proof requirement by Electrical Standard;
- 5-minutes continuous working time;
- Shock-proof relays special for motors.

II. Parameters

Model No.	Rated Voltage	Working Temp.	Loading Power	Frequency	Sensitivity	Receive Capacity	Operation
RF-A3	220VAC 50Hz ±10%	-40°C~+85°C	≤ 300W	433.92MHz	-110dBm	≤ 20pcs transmitter	Remote/Manual
RF-A6	110VAC 60Hz ±10%						

IV. Install

Wiring

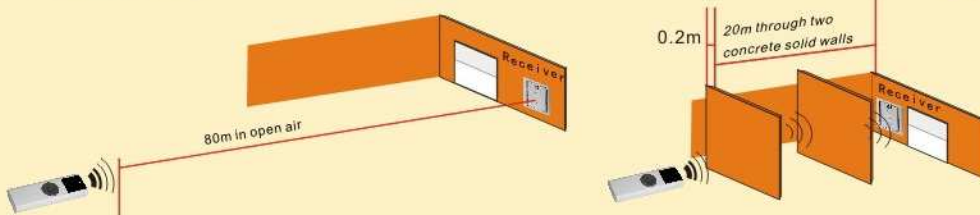
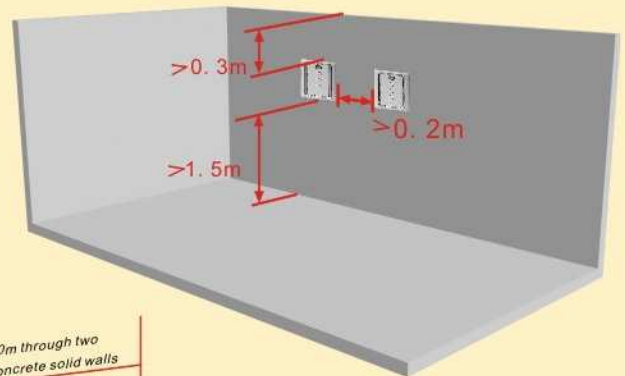


Radio Transmitter



! Remarks:

- Besides checking power supply, follow below items;
- To make good control range, avoid influence of metal parts;
- Control range: 800cm in open air;
- The range between receiver and floor: ≥150CM;
- The range between receiver and ceiling: ≥30CM;
- The range between each two receiver: ≥30CM;
- Cut off power before wiring;
- Avoid static damage;
- Use flexible cables.



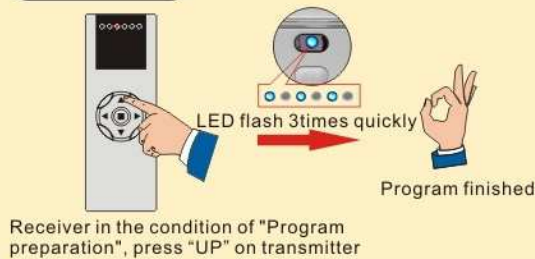
V. Operation

- * If you use multiple channel transmitter, choose the channel first (If use single channel transmitter, no need choose the channel);
- * Motor running time 5 minutes, UP/DOWN switch delay time is 500ms.

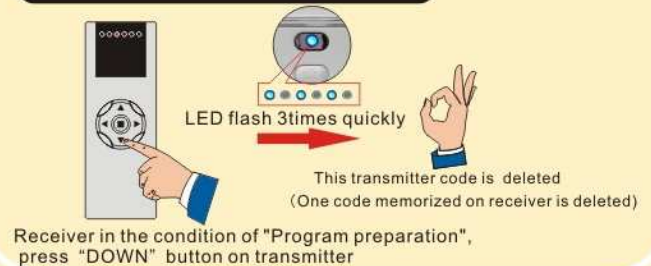
Program preparation



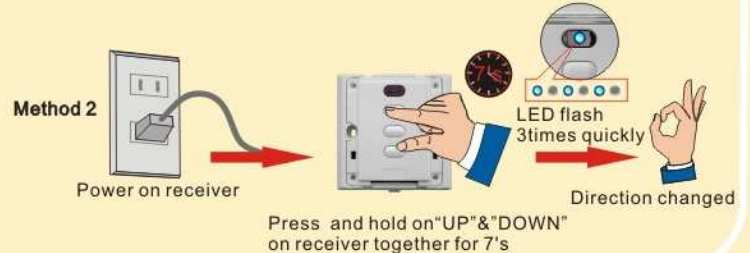
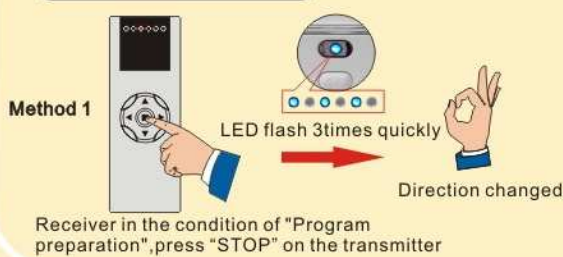
Program



Delete one code on receiver



Change direction



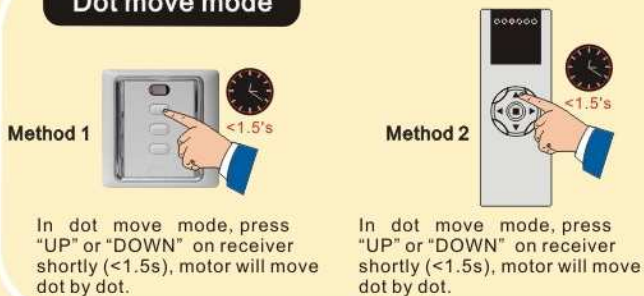
Delete all codes on receiver



Switch "continuous run mode to "dot move mode"



Dot move mode



Continuous run in dot move mode

